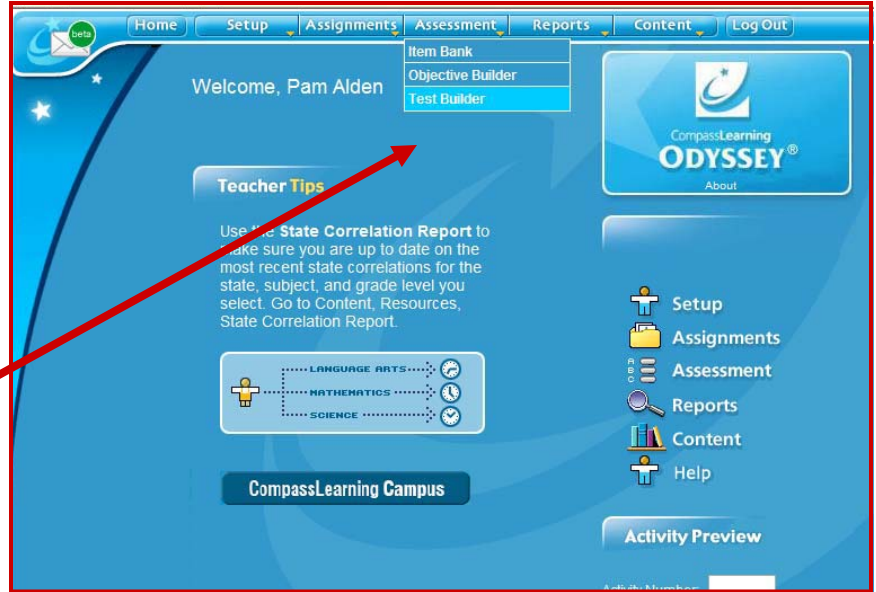


## Informed Teaching

It's the beginning of the year and a great time to use Odyssey to find out which skills your students need and which ones they don't.

### Grades K-2

You can use the test builder feature in Odyssey to easily build an overview assessment of skills for Math or Language arts.

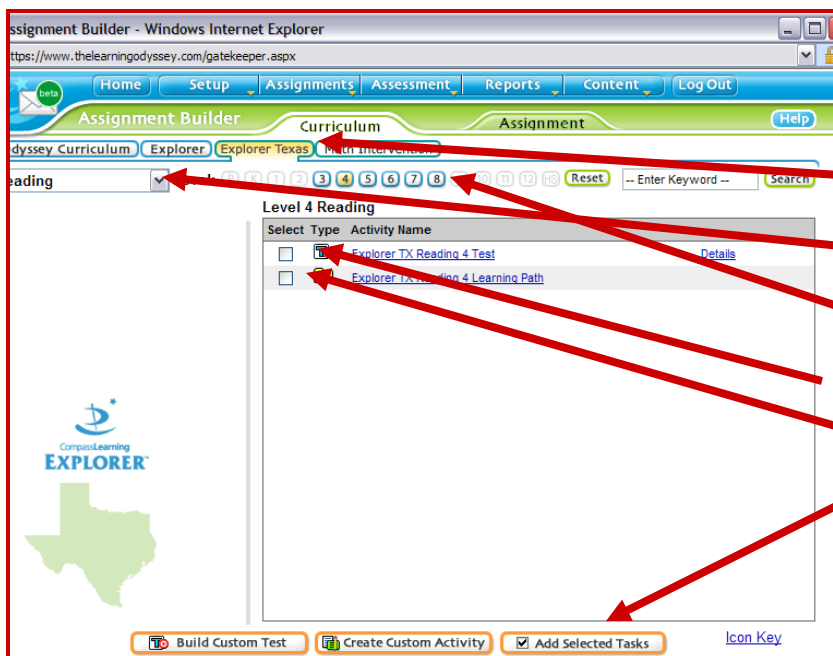


You can select skill areas to assess then have a **Learning Path** created based on the assessment results.

Jenna and/or I will be glad to help you with this.

### Grades 3-5

Use the Assignment Builder Tab to set up a **Test** and a **Learning Path** for **Reading** and /or **Math**.



Select Explorer Texas

Select a subject Area

Select a grade

Click both the test and the Learning Path

Then click Add Selected Tasks