

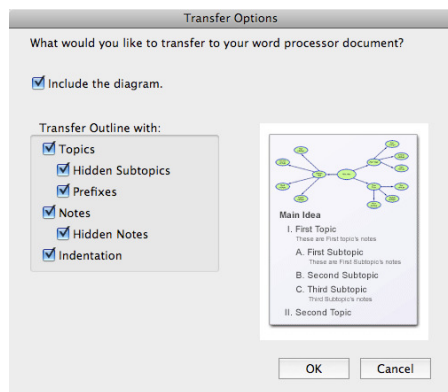
Making and Sharing a KWL chart in Inspiration

This tip tells you how to create a KWL chart that you can use with your students and share with your parents via email. The first document has the directions and the second is the KWL chart.

1. Use the attached Inspiration KWL chart with your class at the beginning of a new unit.
2. Once the chart is completed, export it by clicking on this icon:

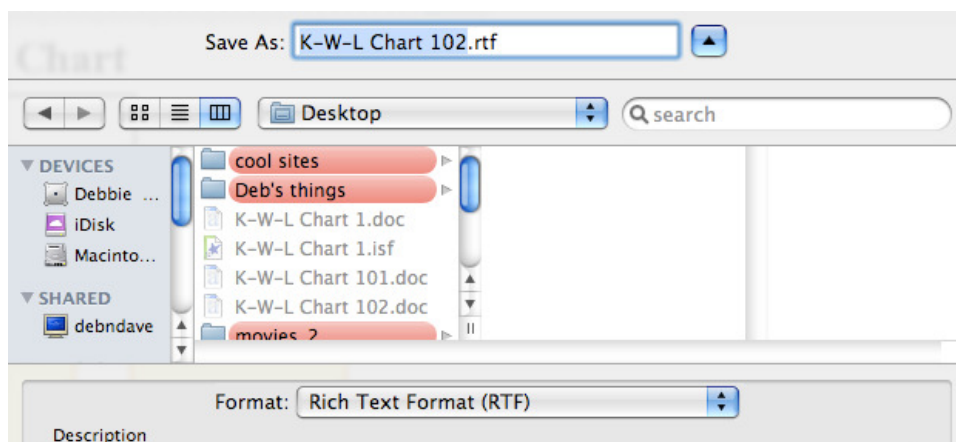


3. When the **Transfer Options** box pops up, click **OK**.



4. This exports it to **Word**. Once you have it in **Word** you can edit the font and pretty it up.

5. In order to save it in a format that all of your parents can read no matter what kind of computer they have, go to **Save As** and in the **Format** box, select **Rich Text Format (RTF)**.



6. Attach it to an email to your parents.