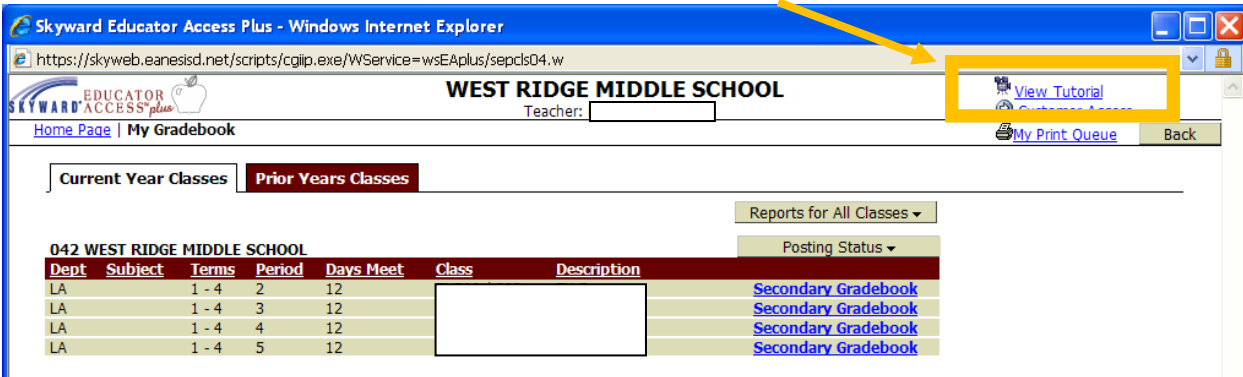


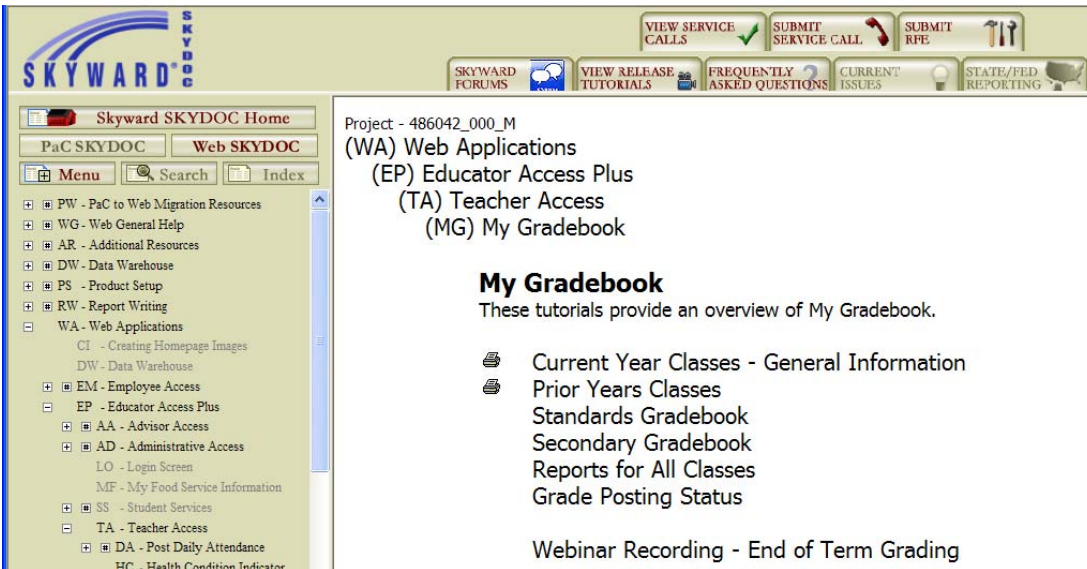
## Skyward Online Help for Teachers

Skyward has made available online help for teachers in the form of documentation/tutorials/webinars which can be accessed right from the gradebook through a 'View Tutorial' or 'Help' option at the top of the screen.

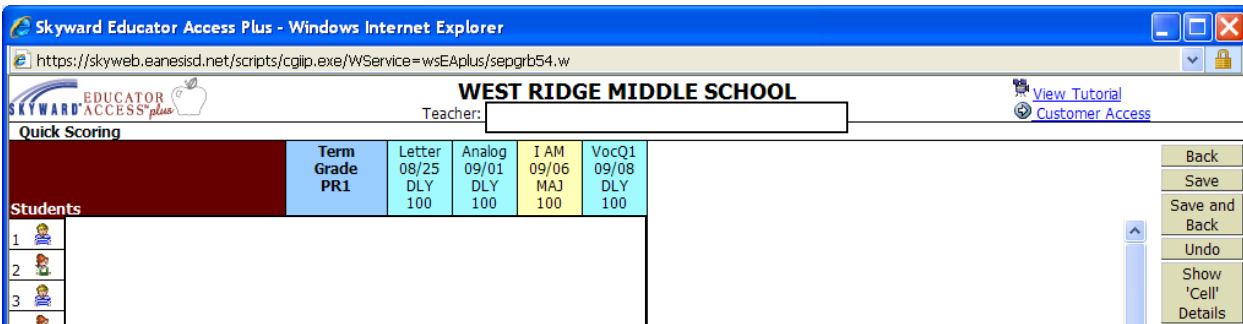
Below are a few examples of how teachers can access online help:



By clicking the 'View Tutorial' option on the Class List screen shot above this opens a new screen to SkyDoc with various tutorials/documents covering topics related to the Classes section of the gradebook.



Below is an example of a Quick Scoring screen – when View Tutorial is selected on this screen SkyDoc opens up to tutorials/documentation specific to Quick Scoring (see next screen shot).



SkyDoc opens up to tutorials/documentation specific to Quick Scoring (see next screen shot).

Skyward Software Documentation - EANES ISD - Windows Internet Explorer

https://skydoc.skyward.com/Default.aspx?MenuPath=WA\*EP\*TA\*MG\*G2\*MS

VIEW SERVICE CALLS | SUBMIT SERVICE CALL | SUBMIT RFE

SKYWARD FORUMS | VIEW RELEASE TUTORIALS | FREQUENTLY ASKED QUESTIONS | CURRENT ISSUES | STATE/FED REPORTING

Skyward SKYDOC Home

PaC SKYDOC | Web SKYDOC

Menu | Search | Index

- EP - Educator Access Plus
  - AA - Advisor Access
  - AD - Administrative Access
  - LO - Login Screen
  - MF - My Food Service Information
- SS - Student Services
- TA - Teacher Access
  - DA - Post Daily Attendance
  - HC - Health Condition Indicator
  - MA - My Activities
  - MC - My Classes
- MG - My Gradebook
  - G1 - Standards Gradebook
  - G2 - Secondary Gradebook
- AS - Assignments
- AT - Attendance
- BK - Backed up Gradebooks
- CO - Comments
- CS - Classes

(WA) Web Applications

- (EP) Educator Access Plus
- (TA) Teacher Access
- (MG) My Gradebook
- (G2) Secondary Gradebook
- (MS) Main Screen

**Main Screen**

- Auto-Transfer Scores from Dropped Section
- Transfer Assignments/Term Scores from a Dropped Class
- Manually Enter Term Scores
- One-Click Transfer Percents from a Dropped Class
- Quick Score Entry
- Attendance Threshold Override Grade Utah Customers

Below is an example of an assignment maintenance screen – when View Tutorial is selected on this screen SkyDoc opens up to tutorials/documentation specific to Assignments (see next screen shot).

Skyward Educator Access Plus - Windows Internet Explorer

https://skyweb.eanesisd.net/scripts/cgip.exe/WService=wsEPlus/sepgrb06.w

WEST RIDGE MIDDLE SCHOOL

Teacher: [ ]

View Tutorial | Customer Access

**Assignment Maintenance**

**Add Assignment**

Category: DLY - 50% - DAILY

Description: [ ]

Detailed Description: [ ]

Assignment Group: [ ]

Entered Date: Fri, Sep 9 2011

Assign Date: Sep 09 2011

Proposed Due Date: Sep 09 2011

Actual Due Date: 01 2011

Save and Back

Save and Add Another

Save and Score

Undo

Back

Attach (0)

Check Spelling

SkyDoc opens up to tutorials/documentation specific to Assignments (see below).

Skyward Software Documentation - EANES ISD - Windows Internet Explorer

https://skydoc.skyward.com/Default.aspx?MenuPath=WA\*EP\*TA\*MG\*G2\*MS

VIEW SERVICE CALLS | SUBMIT SERVICE CALL | SUBMIT RFE

SKYWARD FORUMS | VIEW RELEASE TUTORIALS | FREQUENTLY ASKED QUESTIONS | CURRENT ISSUES | STATE/FED REPORTING

Skyward SKYDOC Home

PaC SKYDOC | Web SKYDOC

Menu | Search | Index

- WG - Web General Help
- AR - Additional Resources
- DW - Data Warehouse
- PS - Product Setup
- RW - Report Writing
- WA - Web Applications
  - CI - Creating Homepage Images
  - DW - Data Warehouse
- EM - Employee Access
- EP - Educator Access Plus
  - AA - Advisor Access
  - AD - Administrative Access
  - LO - Login Screen
  - MF - My Food Service Information
- SS - Student Services
- TA - Teacher Access
  - DA - Post Daily Attendance

(WA) Web Applications

- (EP) Educator Access Plus
- (TA) Teacher Access
- (MG) My Gradebook
- (G2) Secondary Gradebook
- (AS) Assignments

**Assignments**

These tutorials provide an overview of Assignments.

- Add New Assignment
- Add New Assignment from the Assignment List
- Edit Assignment from the Assignment List
- Clone Assignments
- Delete an Assignment from the Assignment List
- Score Entry

Below is an example of an the Other Access area within the gradebook – when I select Message Center I can see an option for ‘Help’ at the top of the screen then Skydoc – Skyward Documentation – when I click on Help I can search for Message Center to get details on utilizing this area.

