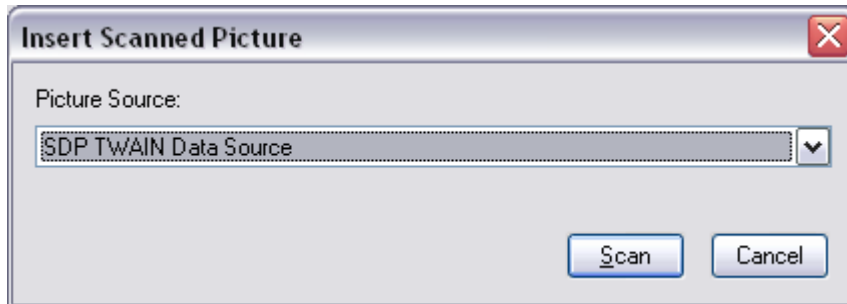


Inserting a Picture from your SAMSUNG Doc Camera to Notebook 10

1. Open NOTEBOOK
2. Choose INSERT-GET PICTURE FROM SCANNER
3. Choose SDP TWAIN



4. Click SCAN
5. You will be taken the SAMSUNG SDP850DX USB Viewer
6. Click CAPTURE on the bottom right
7. Click TWAIN SCAN on the bottom right
8. Click RELEASE
9. Go back to NOTEBOOK
10. Click cancel
11. Your image will be in Notebook