

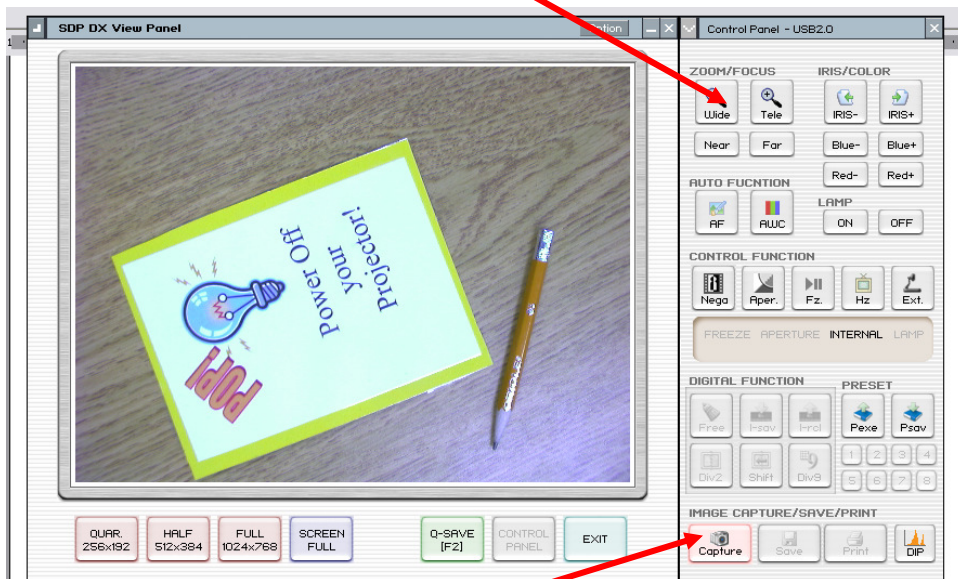
HOW TO CAPTURE PICTURES USING THE SAMSUNG DOCUMENT CAMERA

1. Change the computer resolution

The document camera requires a setting of at least 1024 x 768 but some of the cameras are also connected to the computer with the projector which requires 800 x 600, so in order for the program to work you may need to adjust the resolution.

To do that

- Right click on the desktop and choose properties.
 - Choose the settings tab from the window that pops up.
 - Slide over from 800 x 600 to 1024 x 768
2. Turn on the doc cam
 3. Start>Programs>SDP USB Viewer>SDP USB Viewer (note: you also have the choice of SDP AVI Capture. This will create a movie from a process that you do under the camera. If you want a still picture you choose the viewer.)
 4. Place picture under camera.
 5. Adjust using wide and tele buttons



6. Click the Capture button

HOW TO CAPTURE PICTURES USING THE SAMSUNG DOCUMENT CAMERA

7. Save in the folder on your computer you want it to be in. (the save button appears after you capture the picture. It saves as a .jpg.

